



VELOCITYCLOTHING



# Velocity Clothing Lookbook

Apparel that gets the job done

*Corporate Wear, Work Wear, Teamwear, School Uniforms and Bespoke specialists*

# Welcome

- 05. Our Story
- 06. Social Responsibility
- 07. The Velocity Process
- 08. Materials and Technology
- 12. Corporate Wear
- 20. Workwear
- 24. Tradewear
- 28. Hi Vis - PPE Gear
- 32. School Wear
- 38. Teamwear on Field
  - Rugby Union
  - Rugby League
  - Netball
  - Basketball
  - Cricket
  - Football
  - Hockey
  - Rowing
  - BMX / MTB / Cycling
- 58. Names and Numbers
- 60. Teamwear off Field
- 64. Supporters Gear
- 70. Functional Wear
- 76. Accessories
- 82. Promotional Items
- 86. Case Studies
- 88. GVG In-house Brands
- 90. Size Guide



**A school uniform is not just a uniform. A company branded polo is not just a polo. A waterproof jacket with your logo on the chest is not just a jacket for days of dodgy weather.**

They are the artifacts of your organisation.

A way to reflect your values and vision to the rest of the world and give your staff and students a sense of unity. If designed right, these artifacts become the pillars of your company culture.

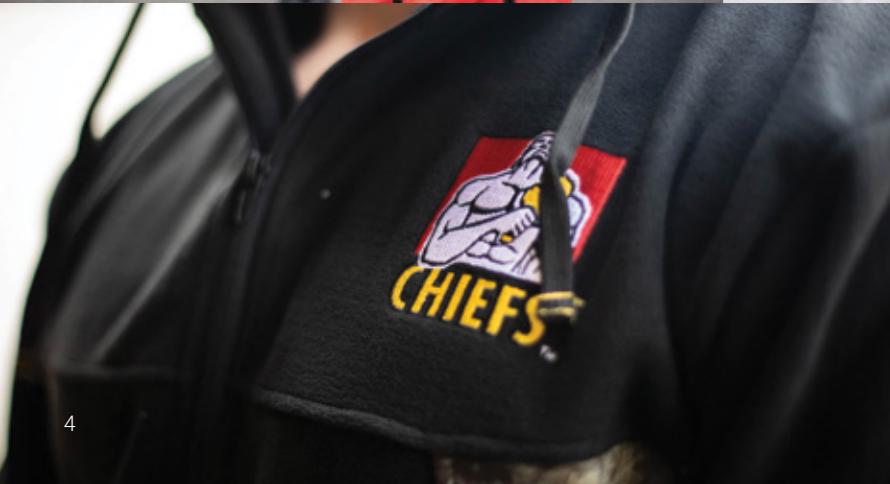
Let us talk customised apparel solutions for your business.

## Get in touch

**p.** +64 0800 504 063

**e.** [sales@velocityclothing.co.nz](mailto:sales@velocityclothing.co.nz)

**w.** [velocityclothing.co.nz](http://velocityclothing.co.nz)



Est. 2002

Velocity Clothing provides Aotearoa's school kids, local sports teams, builders, milk tanker drivers and many more with hardwearing, technical and fit-for-purpose apparel.

With offices and warehousing in Hamilton and Auckland and sales representatives covering all New Zealand from Cape Reinga to Bluff, we offer our customers our solutions in their local communities, face-to-face.

With more than 40 people spread across design, sales, marketing and warehousing, we work hard to to deliver world-leading technically advanced apparel and accessories in an ethical and timely manner.

Let us create a unique apparel solution and develop a range to meet the specific needs of your business.

Velocity Clothing is part of Global Velocity Group along side, Huntech and VMG Clothing.



# Social Responsibility.

Being a 100% Kiwi owned company, we endeavour to work to the highest standards of social and environmental responsibility and ethical conduct. We are also committed to working with like-minded companies, who pride themselves on their social and ethical responsibilities.

All our supply chain has been directly audited by Global Velocity Group and our own joint venture factory has gone through an independent COC audit (Social Compliance Factory Assessment) and achieved a B rating from SGS. This is something that we are very proud of and will continually develop and improve on.

## Sustainably Aware

We are actively working to ensure as many fabrics as possible in our core range are made from eco friendly, organic and/or recycled fibres.

Our aim is to minimise the impact on the environment whilst providing durability and longevity.

## Innovative Technology

The S.Café Grinder Polo is one of our product ranges delivering high UV protection, quick dry function, colour fastness, odour control, comfort and ease of care. S.Café is a licensed fabric with a bluesign® certificate which guarantees the highest level of consumer safety by employing methods and materials in their manufacture that conserve resources and minimize the impact on people and the environment.

The fabric in our Grinder Series garments uses the waste product of coffee grinds, recycled polyester and cotton. The bluesign® standard is rigorous and the vision is Pure Materials, Pure Benefit. Wearing a cup of coffee is the perfect match for our exacting demands in 'Performance'.



# The Velocity Process.

Let us create a unique apparel solution and develop a range to meet the specific needs of your business.

You will be part of the journey all the way, from when the first ideas are scribbled on a piece of paper to when the finished product makes its way out of our warehouse.

### Meetup

You meet one of our sales reps to discuss your needs



### Design Concepts

Our designers put together a design board based on the information from the meeting



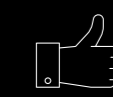
### Sampling

If you like the design board, the development, sampling and manufacturing process starts



### Sign off / Production

The final sample is signed off and the bulk production begins



### Storage & Online Order

We store your uniforms and staff or parents can purchase them online when needed



# Materials and Technology.



Coatings that repel water, mud, and oil like water off a duck's back. Fabric designed to transfer moisture away from your body to the outer surface of the garment and membranes that allow your body to breath when things heat up.

For a decade we have been providing hunters and outdoors people around the globe with our technically advanced Huntech gear, providing us with an expertise in technical wear that feeds into all other areas of our business.

Whether you need a rain jacket for your drivers, a breathable base layer for your fruit picking crew or a puffer jacket to keep your sales team warm in winter, our design and technical team will know exactly how to sort you out when it comes to technical features.



Moisture-wicking



Active stretch



Waterproof



Windproof



Breathable



Lightweight



Flatlock Seams

# Customisation is key.



Throughout the design of your new uniform, the sky is the limit in terms of deciding on the right colours to match your branding, suitable fabric for your climate, where to put your logo etc.

One of our sales representatives will be dedicated to your job and will act the link between your thoughts and ideas and our team of designers in Hamilton and Auckland.

In other words, whether you want cotton drill, recycled polyester fleece, merino or single jersey fabric is entirely up to you. Same goes for your colour choices; berry pink, ocean blue, military or camouflage - you name it.

We will guide you, but the final decision is yours.



# Materials and Technology.



# Materials and Technology.



## **Sportlite Mesh**

Lightweight, snag-free and moisture wicking. Our Sportlite Mesh is the ideal choice for tees, polos, active shorts, and team-wear.



## **Evaporlite**

Our premium sport fabric, which is heavier compared to our Sportlite Mesh. The Evaporlite is snag-free and very absorbent. With a little extra toughness to it, it is suitable for garments that need a maximum range of movement. Perfect for basketball uniforms, polos, and netball dresses.



## **Sphere**

Textured sport fabric. Perfect for active polos, tees, and active shorts. It is lightweight, absorbent, and comfortable against the skin.



## **Sports Pique**

Moisture wicking to keep you cool but with subtle texture and stronger handle. Suitable for polos and tees.



## **DRYLITE**

Lightweight and comfortable against the skin. Suitable for garments where comfort cannot be compromised. Hard-wearing and great for tees, singlets, and summer sports like golf and cricket.



## **CVC Fleece**

Fleece backed fabric to provide warmth without pilling. An industry standard for hoodies, trackpants and letterman jackets.



## **Hard Face Fleece**

Durable polyester with a tough exterior that provides water repellence for small showers. With a comfortable fleece inner this is a great hoodies and jackets choice for winter sports.



## **Softshell Bonded**

The perfect active jacket fabric with a smooth cool outer and snug fleece inner. The inner membrane is bonded which provides wind and spray resistance.



## **RIPSTOP**

The ideal choice for track-suit jackets and sports warm-up jackets. A very lightweight fabric with good strength, lining and mesh or tricot for extra warmth. Ripstop is shower proof and wind resistant.



## **LAYER**

The perfect wet weather fabric. LAYER is breathable with a 10,000mm rating which makes it great for packable wet weather jackets and pants.



## **WOVEN POLY**

Lightweight and durable for maximum performance. Suitable for active workwear and gym or active sports short.



## **DRILL**

Durable twill weave in a wash-and-wear polyester. Great moisture management and comfort for heavy duty workwear and rugby.



## **IMPACT**

Strong, stretchy, and durable. Our best polyester fabric that stays breathable during activity. Suitable for rugby jerseys, cricket pants, bowls pants and much more.



## **SJ-PRO**

Our 100% polyester high-performance knit fabric with great strength, stretch and durability. Suitable for rugby jerseys, cricket shirts, netball dresses and more.



## **Lycra**

Our Lycra fabric is added to panels in those high-stress areas on your performance wear. It provides a resilient shield against the environments and is suitable on tees, polos, shorts, and as built-in underwear.



## **Cotton Drill Heavy**

Our Cotton Drill Heavy fabric is for outer layers. Ideal for overalls, work shirts, trousers, and shorts. Absorbent and heat regulating for comfort on job sites where extra protection and strength is needed.



## **Brushed POLYTricot**

The perfect indoor or travel tracksuit fabric. Also used in hoodies, zip-up jackets and track pants. Easy to sublimate.



## **Micro Fleece Pill-free,**

Densely packed fibres for a snag free, durable garment. Warm and comfortable for outdoor applications.



Corporate Wear

Men's & Women's

## Corporate Wear.

Walk into your next meeting with confidence in a company branded shirt, skirt or blazer that represents your values as a business.

Sometimes all it takes to seal the deal is that first impression of professionalism.





# Corporate Wear Men's.



**VPO103AA - Men's SS Polo**

Selection of fabric choices available  
Button placket, collar, drop shoulder

Available in a range of colours



**VPO104AA - Men's LS Polo**

Selection of fabric choices available  
Button placket, collar, drop shoulder

Available in a range of colours



**VWP10310 - Men's Zip LS Merino**

Merino Wool / Acrylic  
1/4 Zip neck, drop shoulder

Available in Navy, Black



**VSH1400 - Men's Pro Short**

Selection of fabric choices available  
4 pockets, fly/button closure

Available in a range of colours



**VTE104KA - Men's LS Thermal**

Polyprop  
Slim fit, V-neck

Available in Navy, Black



**VVS3ADV - Men's Puffer Vest**

Polyester  
Zip front entry, collar, pockets

Available in Navy, Black

Jacket Available





# Corporate Wear Men's.

LS Available



**VST105A - Men's SS Dress Shirt**

Selection of fabric choices available  
Button through front, pocket at left chest

Available in a range of colours

SS Available



**VST102AA - Men's Check LS Dress Shirt**

Limited fabric choices available  
Button through front, fitted, button cuff

*\*MOQ is required for check fabrics*



**VJK4NMJ - Men's Blazer**

Mechanical Polyester  
Button closure, lower front pockets, fully lined

Available in Navy, Black



**VPT100 - Men's Dress Pant**

Polyester/Viscose, Polyester/Cotton  
Fly/Button closure, internal adjustment system

Available in Navy, Charcoal, Black



**VJK101XA - Men's Softshell Jacket**

Softshell  
Zip front entry, collar, pockets

Available in Navy, Black



**VVSJ3881 - Men's Softshell Vest**

Softshell  
Zip front entry, collar, pockets

Available in Navy, Black



# Corporate Wear Women's.

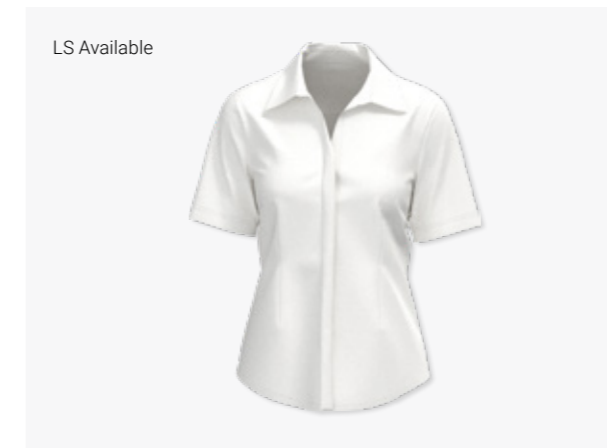


LS Available

**VPO201AA - Women's SS Polo**

Selection of fabric choices available  
Button placket, collar, drop shoulder

Available in a range of colours



LS Available

**VS312LS - Women's SS Blouse**

Polyester/Cotton  
Fitted, covered button through placket

Available in White, Sky, Black



Cardigan Available

**VPLP3506 - Women's V Pullover**

Viscose/Nylon  
V neck, rib cuff and neckline

Available in Navy, Charcoal, Black



**VBS724L - Women's Work Pant**

Cotton/Elastane  
Side hip pockets, fly/button closure

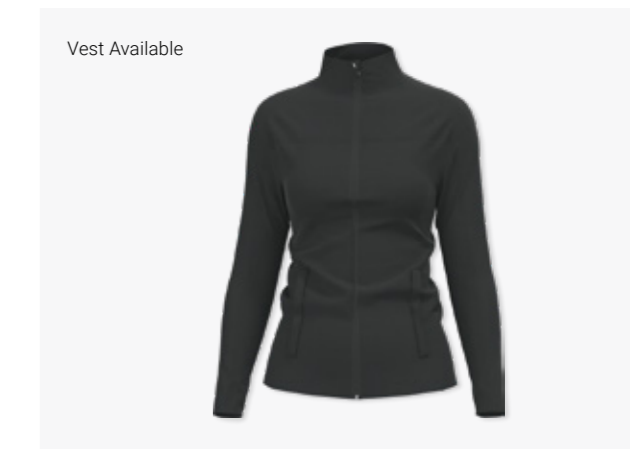
Available in Navy, Grey, Black



**VSH4339 - Women's Pleat Skirt**

Polyester/Viscose, Polyester/Cotton  
Side elastic, kick pleat, single pocket, back zip entry

Available in Navy, Charcoal, Black



Vest Available

**VJK1378 - Women's Softshell Jacket**

Softshell  
Zip front, pockets, high collar

Available in Navy, Black



Workwear

Men's & Womens

## Workwear.

The smart casual range for when a blazer is a bit over the top and a bush coat and a pair of rugby shorts are slightly too casual.

Our workwear category is aimed at those of you who need a softshell jacket for when your staff hits the road on a rainy day, a polo for the office or a fleece sweatshirt for the cold winter months.





# Workwear Men's & Womens.



**VPO103AA - Men's SS Polo**

Selection of fabric choices available  
 Button placket, collar, drop shoulder, left chest pocket  
 Available in a range of colours



**VTE4461 - Men's Fleece Tee**

Fleece, 225 GSM  
 Crew neck, left chest zip pocket  
 Available in a range of colours



**VJK109TA - Men's Fleece Jersey**

Fleece, 225 - 280 GSM  
 Drop shoulder, full zip entry, high collar  
 Available in a range of colours



**VPT4409 - Men's Work Pant**

Polyester/Viscose, Polyester/Cotton  
 Fly/button closure, side pockets  
 Available in Navy, Charcoal, Black



**VSH4404 - Men's Cargo Short**

Polyester/Viscose, Polyester/Cotton  
 Fly/button closure, side pockets, cargo pockets  
 Available in Navy, Charcoal, Black



**VJK101XA - Men's Softshell Jacket**

Softshell  
 Full zip front, covered zip pockets, high collar  
 Available in Navy, Black



Trade wear

Men's & Womens

# Trade wear.

Plumbers, Builders, Concrete Layers,  
Fonterra drivers and many more.

For a decade we have been supplying big and small companies in Australasia with our hard-wearing, functional, and cutting-edge workwear. It is your oilskin vests, bush coats, fleece tee and all the other essential tradie kit.





# Trade wear Men's & Womens.



**VPO103AA - Men's High Vis SS Polo**  
 Polyester  
 Button placket, collar, drop shoulder  
 Meets day code standards for AS/NZS 4602.1.2011  
 Available in Fluro Yellow, Blaze Orange



**VTE4461 - Men's High Vis Fleece Tee**  
 Fleece, 225 GSM  
 Crew neck, zip pocket  
 Meets day code standards for AS/NZS 4602.1.2011  
 Available in Fluro Yellow, Blaze Orange



**VSL1406 - Men's High Vis Singlet**  
 Polyester  
 Crew neck, slim shoulder  
 Meets day code standards for AS/NZS 4602.1.2011  
 Available in Fluro Yellow, Blaze Orange



**VPT4409 - Men's Work Pant**  
 Polyester/Viscose, Polyester/Cotton  
 Fly/button closure, side pockets  
 Available in Navy, Charcoal, Black



**VSH4404 - Men's Cargo Short**  
 Polyester/Viscose, Polyester/Cotton  
 Fly/button closure, side pockets, cargo pockets  
 Available in Navy, Charcoal, Black



**VSH111 - Men's Rugby Short**  
 Polyester/Viscose, Polyester/Cotton  
 Elastic waist with draw cord, side pockets  
 Available in Navy, Charcoal, Black



## Hi Vis - PPE Gear.

Be seen, be safe. Keeping your staff safe is one of the single-most important tasks you face as a business.

Equipping your staff with the proper safety gear sends the right message to your workers and their families, that you care about their health and safety, and it sends a clear message to your stakeholders that you take responsibility for your workers wellbeing. All our safety gear meets safety NZ safety code.





# Hi Vis - PPE Gear Men's & Womens.



**VVS4416 - Hi Vis Safety Vest**

Polyester Twill  
Zip front closure, chest pocket, reflective tape  
Meets day/night code standards for AS/NZS 4602.1.2011

Available in Fluro Yellow, Blaze Orange



**VPO4356 - Hi Vis SS Polo**

Polyester  
Button placket, collar, drop shoulder, reflective tape  
Meets day/night code standards for AS/NZS 4602.1.2011

Available in Fluro Yellow, Blaze Orange



**VJK4102 - Hi Vis 2 in 1 Jacket**

Nylon Oxford, Polyester Oxford  
Hood, waterproof, internal zip out fleece vest, reflective tape  
Meets day/night code standards for AS/NZS 4602.1.2011

Available in Fluro Yellow, Blaze Orange



**VVS4485 - Hi Vis Waterproof Vest**

Nylon Oxford, Polyester Oxford  
Lower side pockets, fleece lined, chest pocket, reflective tape  
Meets day/night code standards for AS/NZS 4602.1.2011

Available in Fluro Yellow, Blaze Orange



**VJK4482 - Hi Vis Fleece Jacket**

Fleece, 280 - 350 GSM  
Lower side pockets, fleece lined, chest pocket, reflective tape  
Meets day/night code standards for AS/NZS 4602.1.2011

Available in Fluro Yellow, Blaze Orange



**VOV4483 - Hi Vis LS Overall**

100% Cotton  
Full length, elastic cuff, pockets, metal zip entry, reflective tape  
Meets day/night code standards for AS/NZS 4602.1.2011

Available in Fluro Yellow, Blaze Orange





## School Uniforms.

Choose your own fabric, tell us where to put the logo and be part of the design process from the beginning to the end.

With the right uniform you show parents, students and staff what values your school represents and where you are heading. It needs to be tough enough to survive the lunch break rugby session, yet comfortable enough to wear for hours of sitting on your bum, listening to Ms. Smith talk about Greek mythology.





# School Uniforms Boys.



**VSH4290 - Boys SS Shirt**

Selection of fabric choices available  
 Button through placket, collar, drop shoulder, left chest pocket  
 Available in a range of colours



**VPO303AA - Youth SS Polo**

Selection of fabric choices available  
 Button placket, collar, drop shoulder, left chest pocket  
 Available in a range of colours



**VJK309UA - Youth LS Fleece Sweatshirt**

Fleece, 225 - 280 GSM  
 Drop shoulder, full zip entry, pockets  
 Available in a range of colours



**VSH4157 - Boys School Short**

Polyester/Viscose, Polyester/Cotton  
 Fly/button closure, side pockets, adjustable buckles  
 Available in Navy, Charcoal, Black



**VJK301XA - Youth Softshell Jacket**

Softshell  
 Long sleeve, zip front, pockets  
 Available in Navy, Black



**VS0102 - Youth School Sock**

Nylon/Cotton  
 Available in a range of colours



# School Uniforms Girls.



**VS312LS - Girls SS Blouse**

Selection of fabric choices available  
Button through placket, collar, drop shoulder

Available in a range of colours



Plain Colours Available

**VDR005 - Girls Pinafore**

Polyester/Viscose, Polyester/Cotton  
Button straps, side entry, pocket

MOQ is required for check fabrics



**VJK4251 - Youth LS Fleece Sweatshirt**

Fleece, 225 - 280 GSM  
Drop shoulder, full zip entry, pockets

Available in a range of colours



**VSK4339 - Girls School Skirt**

Polyester/Viscose, Polyester/Cotton  
Back kick pleat, back zip/button entry, 1/4 elastic

Available in Navy, Charcoal, Black



**VSK4315 - Girls Skort**

Polyester/Viscose, Polyester/Cotton  
Short base, skirt overlay on front, elastic back

Available in Navy, Charcoal, Black



**VJM3KJ - Youth V Jumper**

Wool/Acrylic  
V neck, rib bands

Available in Navy



## Teamwear on Field.

Team spirit is all about culture. It's the way we communicate on the field when we are three points behind. But most importantly - *it is what we wear.*

Let us have a chat and customise you a uniform that expresses your core values and boosts your feeling of unity. A cool looking, hardwearing outfit that can take a serious beating on the field, survive dad's unforgiving washing routines and still be comfortable to wear.





# Teamwear Rugby Union.



**VJR1150A - Men's Premier Jersey**  
 VJR2150A - Women's / VJR3150A - Youth  
 Impact / SR Pro  
 Slim fit, Lycra side panels, piping detailing  
 Available in a range of colours \*Sublimation



**VJR120P - Men's Pro Jersey**  
 VJR220P - Women's / VJR320P - Youth  
 Impact / SR Pro  
 Slim fit, contrast panelling, pro neckline  
 Available in a range of colours \*Sublimation



**VJR110KA - Men's Referee Jersey**  
 VJR210KA - Women's / VJR310KA - Youth  
 Impact / SR Pro  
 Regular fit, referee neckline  
 Available in a range of colours



**VSH111 - Mens' Sublimated Short**  
 VSH211 - Women's / VSH311 - Youth  
 Cotton/Polyester Drill  
 Elastic waist W/ drawcord, lycra gusset  
 Available in a range of colours \*Sublimation



**VSH112 - Men's Club Short**  
 VSH212 - Women's / VSH312 - Youth  
 Cotton/Polyester Drill  
 Elastic waist W/ drawcord, lycra gusset, chamois panels  
 Available in a range of colours



**VSH111 - Men's Rugby Short**  
 VSH211 - Women's / VSH311 - Youth  
 Cotton/Polyester Drill  
 Elastic waist W/ drawcord, lycra gusset  
 Available in a range of colours



# Teamwear Rugby League.



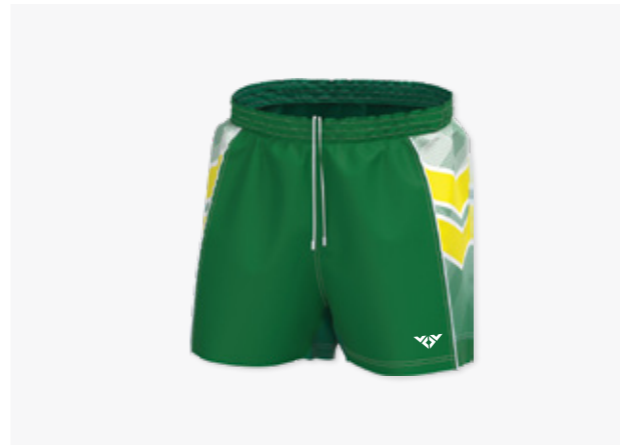
**VJR115KA - Men's Premier Jersey**  
 VJR215KA - Women's / VJR315KA - Youth  
 Impact / SR Pro  
 Slim fit, lycra side panels, piping detailing  
 Available in a range of colours \*Sublimation



**VJR1150A - Men's Premier Jersey**  
 VJR2150A - Women's / VJR3150A - Youth  
 Impact / SR Pro  
 Slim fit, lycra side panels, piping detailing  
 Available in a range of colours \*Sublimation



**VJR123KA - Men's Raglan Jersey**  
 VJR223KA - Women's / VJR323KA - Youth  
 Impact / SR Pro  
 Regular fit, lycra gusset  
 Available in a range of colours \*Sublimation



**VSH112 - Men's Club Short**  
 VSH212 - Women's / VSH312 - Youth  
 Cotton/Polyester Drill  
 Elastic waist W/ drawcord, lycra gusset, chamois panels  
 Available in a range of colours \*Sublimation



**VSL115J - Men's Mango Singlet**  
 VSL215J - Women's / VSL315J - Youth  
 Selection of fabric choices available  
 Slim fit, slim shoulder, band finishing  
 Available in a range of colours \*Sublimation



**VSH117U - Men's Gym Short**  
 VSH217U - Women's / VSH317U - Youth  
 Selection of fabric choices available  
 Elastic waist W/ drawcord, lycra gusset, pockets  
 Available in a range of colours



# Teamwear Netball.



**VDR202JV - Women's Active Netball Dress**  
VDR302JV - Youth  
Sportlite / SR Pro  
Slim fit, crew neck, band trim  
Available in a range of colours \*Sublimation



**VSL201KV - Women's Netball Singlet**  
VSL301KV - Youth  
Sportlite / SR Pro  
Regular fit, V neckline, band trim  
Available in a range of colours \*Sublimation



**VTE203JV - Women's SS Netball Tee**  
VTE303JV - Youth  
Sportlite / SR Pro  
Regular fit, crew neck  
Available in a range of colours \*Sublimation



**VSK202 - Women's Netball Skort**  
VSK302 - Youth  
Sportlite / SR Pro  
Elastic waist, inner skort  
Available in a range of colours \*Sublimation



**VSK201 - Women's Netball Skirt**  
VSK301 - Youth  
Sportlite / SR Pro  
Elastic waist, double front overlay  
Available in a range of colours \*Sublimation



**VBD001 - Women's Netball Bib**  
Sportlite / SR Pro  
Sublimated, velcro  
Available in a range of colours \*Sublimation



# Teamwear Basketball.



**VSL121L - Men's Basketball Singlet**  
 VSL221L - Women's / VSL321L - Youth  
 Sportlite / Drylite  
 Regular fit, basketball neckline, wide band  
 Available in a range of colours \*Sublimation



**VSL115J - Men's Mango Singlet**  
 VSL215J - Women's / VSL315J - Youth  
 Sportlite / Drylite  
 Regular fit, crew neckline, band finish, panels  
 Available in a range of colours \*Sublimation



**VSL101JA - Men's Reversible Singlet**  
 VSL201JA - Women's / VSL301JA - Youth  
 Polyester Mesh  
 Regular fit, crew neckline, band finish  
 Available in a range of colours \*Sublimation



**VSH112 - Men's Long Basketball Shorts**  
 VSH212 - Women's / VSH312 - Youth  
 Sportlite / Drylite  
 Elastic waist W/ drawcord  
 Available in a range of colours \*Sublimation



**VSH117 - Men's Panel Gym Short**  
 VSH217 - Women's / VSH317 - Youth  
 Sportlite / Drylite  
 Elastic waist W/ drawcord  
 Available in a range of colours \*Sublimation



**VTE101KA - Men's SS Supporters Tee**  
 VTE201KA - Women's / VTE301KA - Youth  
 Selection of fabric choices available  
 Regular fit, V neckline  
 Available in a range of colours





# Teamwear Cricket.



**VTE101HA - Men's SS Cricket Tee**  
 VTE201HA - Women's / VTE301HA - Youth  
 SJ Pro / Impact  
 Regular fit, Pope neckline  
 Available in a range of colours \*Sublimation



**VPO103AA - Men's SS Cricket Polo**  
 VPO203AA - Women's / VPO303AA - Youth  
 SJ Pro / Impact  
 Regular fit, collar, 3 button placket  
 Available in a range of colours \*Sublimation



**VPO102AA - Men's LS Cricket Polo**  
 VPO202AA - Women's / VPO302AA - Youth  
 SJ Pro / Impact  
 Regular fit, collar, 3 button placket  
 Available in a range of colours



**VPT101T - Men's Sublimated Cricket Pants**  
 VPT201T - Women's / VPT301T - Youth  
 Impact  
 Elastic waist W/ drawcord, side pockets, unhemmed  
 Available in a range of colours \*Sublimation



**VPT101T - Men's Cricket Pants**  
 VPT201T - Women's / VPT301T - Youth  
 Impact  
 Elastic waist W/ drawcord, side pockets, unhemmed  
 Available in a range of colours



**VVS4509 - Men's Cricket Vest**  
 Impact / Softshell  
 Regular fit, V neck, band finish, lined  
 Available in a range of colours \*Sublimation



# Teamwear Football.



**VTE101KA - Men's SS Football Tee**  
 VTE201KA - Women's / VTE301KA - Youth  
 Sportlite / Drylite  
 Regular fit, V neckline  
 Available in a range of colours \*Sublimation



**VTE101HA - Men's SS Stripe Football Tee**  
 VTE201HA - Women's / VTE301HA - Youth  
 Sportlite / Drylite  
 Regular fit, pope neckline  
 Available in a range of colours \*Sublimation



**VTE104KA - Men's LS Football Tee**  
 VTE204KA - Women's / VTE304KA - Youth  
 Sportlite / Drylite  
 Regular fit, V neckline  
 Available in a range of colours \*Sublimation



**VS0102 - Men's /Women's Pullup Sock**  
 Nylon/Cotton  
 Available in a range of colours



**VSH119 - Men's Football Short**  
 VSH219 - Women's / VSH319 - Youth  
 Sportlite / Drylite  
 Elastic waist W/ drawcord  
 Available in a range of colours \*Sublimation



**VJK112KA - Men's LS Goalie Jersey**  
 VJK212KA - Women's / VJK312KA - Youth  
 Sportlite / Drylite  
 Regular fit, V neckline, padded shoulder/elbow  
 Available in a range of colours \*Sublimation



# Teamwear Hockey.



**VSL201KV - Women's Hockey Singlet**  
VSL101KV - Men's / VSL301KV - Youth  
Sportlite / SR Pro  
slim fit, V neckline, band trim  
Available in a range of colours \*Sublimation



**VDR202J - Women's Active Dress**  
VDR302J - Youth  
Sportlite / SR Pro  
slim fit, crew neck, band trim  
Available in a range of colours \*Sublimation



**VTE103KA - Men's SS Hockey Tee**  
VTE203KA - Women's / VTE303KA - Youth  
Sportlite / SR Pro  
Regular fit, V neckline  
Available in a range of colours \*Sublimation



**VSK201 - Women's Skirt**  
VSK301 - Youth  
Sportlite / SR Pro  
Elastic waist, double front overlay  
Available in a range of colours \*Sublimation



**VSK202 - Women's Skort**  
VSK302 - Youth  
Sportlite / SR Pro  
Elastic waist, inner skort  
Available in a range of colours \*Sublimation



**VSH117U - Men's Gym Shorts**  
VSH217U - Women's / VSH317U - Youth  
Sportlite / SR Pro  
Elastic waist W/ drawcord, lycra gusset, pockets  
Available in a range of colours \*Sublimation



# Teamwear Rowing.



**VTE101KA - Men's Team Tee**  
 VTE201KA - Women's / VTE301KA - Youth  
 Sportlite / SR Pro  
 Regular fit, V neckline  
 Available in a range of colours \*Sublimation



**VSL101JA - Men's Crew Singlet**  
 VSL201JA - Women's / VSL301JA - Youth  
 Sportlite / SR Pro  
 Slim fit, Crew neckline  
 Available in a range of colours \*Sublimation



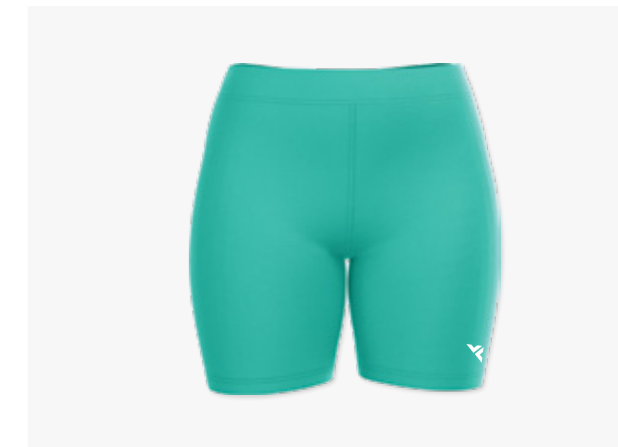
**VON012 - Men's Rowing One piece**  
 Polyester Spandex  
 Slim fit, crew neckline  
 Available in a range of colours \*Sublimation



**VCP001 - Unisex Cap**  
 Selection of fabric choices available  
 6 panel cap, sandwich peak  
 Available in a range of colours



**VPT4184 - Women's Legging**  
 Polyester Spandex  
 Slim fit, Internal elastic band  
 Available in a range of colours



**VSH230 - Women's Bike Short**  
 Polyester Spandex  
 Slim fit, Internal elastic band  
 Available in a range of colours



# Teamwear BMX / MTB / Cycling.



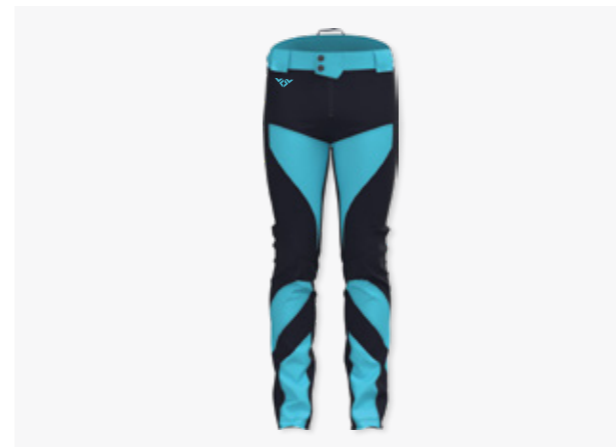
**VTE104KA - Men's LS BMX Jersey**  
 VTE204KA - Women's / VTE304KA - Youth  
 Selection of fabric choices available  
 Regular fit, V neckline or crew neck options  
 Available in a range of colours \*Sublimation



**VTE101HA - Men's SS MTB Tee**  
 VTE201HA - Women's / VTE301HA - Youth  
 Selection of fabric choices available  
 Regular fit, pope neckline  
 Available in a range of colours \*Sublimation



**VVS004 - Men's Cycle Vest**  
 Selection of fabric choices available  
 Slim fit, zip front entry, collar, wide shoulder  
 Available in a range of colours \*Sublimation



**VPT4505 - Men's BMX Pants**  
 Poly Oxford W/ spandex panels  
 Slim fit, multi panel, fly dome entry  
 Available in a range of colours



**VSH1400 - Men's MTB Shorts**  
 Selection of fabric choices available  
 Fly/button closure, side pockets  
 Available in a range of colours \*Sublimation



**VSH014 - Men's Cycle Short**  
 Polyester Spandex  
 Slim fit, Internal elastic band  
 Available in a range of colours

# Names and Numbers.



# Names and Numbers.



## The general rules for team numbers are as follows;

Menswear: 250 mm  
Womenswear & Juniors: 200 mm  
Toddlers: 150 mm

There are specific rules depending on the sports, for example Basketball requires the back to be uninterrupted by designs at no less than 250mm, front number to be no less 100mm.  
Our sales team can instruct you on whats appropriate for your needs.

Numbers can be in solid block colour, or two colour Keyline fill as below:



*Individuals names, or team names sizes are subject to the amount of characters per word.*

Impact

**0 1 2 3 4 5 6 7 8 9**

College Classic

**0 1 2 3 4 5 6 7 8 9**

College Modern

**0 1 2 3 4 5 6 7 8 9**

Monolithic

**0 1 2 3 4 5 6 7 8 9**

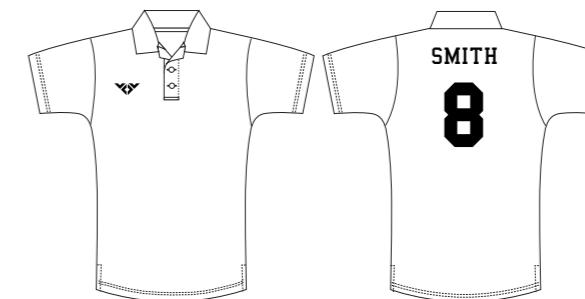
Organic

**0 1 2 3 4 5 6 7 8 9**

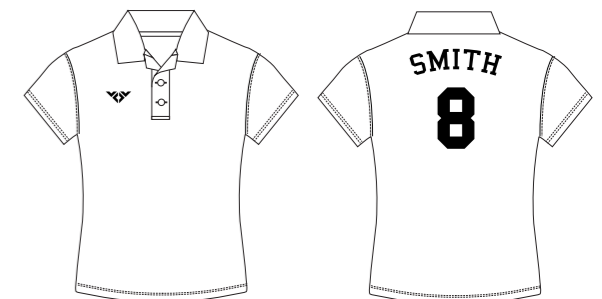
## Artwork Base Sizes

These are the sizes represented in our proposals, all sublimation prints and graphics are in relation to our base sizes.

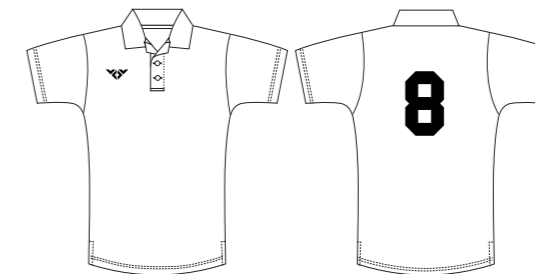
Men's Base Size - Large  
CB Number: 250mm Height



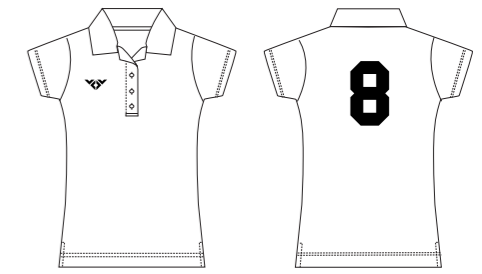
Ladie's Base Size - 12  
CB Number: 200mm Height



Kids Base Size - 10  
CB Number: 200mm Height



Toddler's Base Size - 12  
CB Number: 150mm Height



*Individuals names, or team names sizes are subject to the amount of characters per word.*



## Teamwear off Field.

Teamwear off Field

Training & After Match Gear

The game is over and the adrenalin rush from the win is starting to wear off.

It's time for a warm hose-down in the changing room before getting dressed in a pair of comfy track pants, a cotton polo and putting on your favorite cap with your club logo embroidered on the side.





# Teamwear Off Field.



**VSL115J - Men's Mango Singlet**  
VSL215J - Women's / VSL315J - Youth  
Selection of fabric choices available  
Slim fit, slim shoulder, band finishing  
Available in a range of colours \*Sublimation



**VSL009 - Men's Shell**  
Ripstop with rib  
Relaxed fit, rib neckline and cuff, shower proof  
Available in Navy, Black



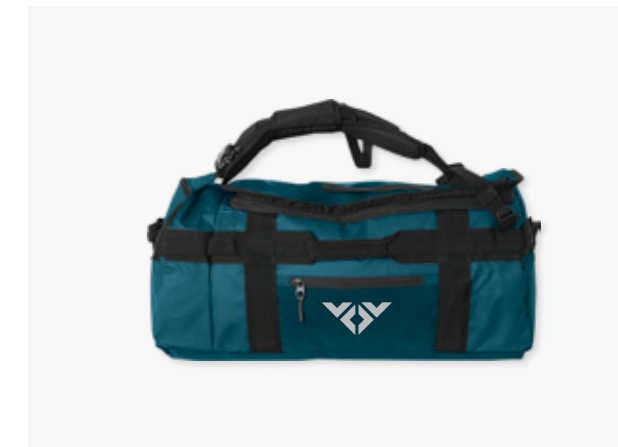
**VJK101UA - Men's Track Jacket**  
VJK201UA - Women's / VJK301UA - Youth  
Brushed Poly Tricot  
Relaxed fit, drop shoulder, full zip entry, high collar  
Available in a range of colours



**VSH117U - Men's Gym Shorts**  
VSH217U - Women's / VSH317U - Youth  
Selection of fabric choices available  
Relaxed fit, elastic waist w drawcord, lycra gusset, pockets  
Available in a range of colours



**VPT104T - Men's Track Pant**  
VPT204T - Women's / VPT304T - Youth  
Selection of fabric choices available  
Relaxed fit, elastic waist w drawcord, side pockets  
Available in a range of colours



**KIT - Kit Bag**  
Polyester  
Reinforced webbing straps, carry handle  
Available in a select range of colours





Supporters Gear

Men's & Women's

## Supporters Gear.

Help boost the atmosphere when your local heroes take on the opposing team with an awesome range of supporter's gear.

It is your side-line jacket, your club-branded umbrella and scarf and it is your snug hoodie that keeps you warm waiting in line by the ticket booth.





# Supporters Gear.



**VHD101WC - Men's Basic Hoodie**  
VHD201WC - Women's / VHD301WC - Youth  
Hard Face Fleece / CVC  
Relaxed fit, adjustable hoodie, joey pocket, rib bands  
Available in a select range of colours



**Curve Peak Cap**  
Cotton Drill  
6 panel cap with curve peak  
Available in a select range of colours



**Acrylic Beanie**  
Acrylic / Wool  
Available in a select range of colours



**Drink Bottle**  
Select range of colours and styles available



**Team Scarf**  
Available in a range of colours



**Team Umbrella**  
Available in a range of colours \*Sublimation



Functional Wear

Men's & Women's

# Functional Wear.

*As a nation of active, outdoorsy people* we need good kit that feels good when we climb mountains and cross oceans.

Our functional wear is more technical and performance orientated than our work gear and is designed in fabrics with properties that keep your body dry, odour free and comfortable whatever environment it finds itself in.





Functional  
Wear.



**EC1136 - Men's Crew Tee SS**

100% Cotton, 180 GSM  
Silicone washed for super soft feel, preshrunk  
Size: XS - 3XL  
Colour: White



**EC1137 - Men's Crew Tee LS**

100% Cotton, 180 GSM  
Silicone washed for super soft feel, preshrunk  
Size: XS - 2XL  
Colour: White



**EC1292 - Men's Hydra Tee SS**

100% Polyester Pique, Combination Knit, 145 GSM  
Quick drying performance fabric, moisture wicking  
Size: XS - 5XL  
Colour: White, Silver



**EC1199 - Men's Grinder Polo**

72% Recycled Polyester, 28% Cotton, 175 GSM  
bluesign accredited fabric, moisture absorbing & fast drying  
Size: XS - 4XL  
Colour: White, Titanium, Silver, Ink, Charcoal, Black



**EC1291 - Men's Hydra Polo**

100% Polyester Pique Combination Knit, 145 GSM  
Quick drying performance fabric, moisture wicking  
Size: XS - 4XL  
Colour: White, Silver, Ink, Charcoal, Black



**EC3830 - Men's NZL Jacket**

77% Nylon, 23% Polyurethane Shell, 100% Polyester Mesh Lining  
Waterproof, breathable, fully seam sealed, mesh lined  
Size: XS - 2XL  
Colour: Titanium, Charcoal



**EC3888 - Men's Keel Short**

100% Polyester, 174 GSM  
Water repellent, quick-dry, non iron garment

Size: 76 - 112  
Colour: Sand, Ink, Charcoal, Black



**EC3813 - Men's Bow Short**

98% Cotton, 2% Elastane Twill, 210 GSM  
Cotton stretch with silicone wash, flat front

Size: 30 - 44  
Colour: Desert, Titanium, Ink, Charcoal



**EC3777 - Men's Trimmer Short**

85% Nylon, 15% Elastane, 160 GSM  
bluesign accredited fabric, high stretch, water repellent

Size: 30 - 44  
Colour: Ink, Charcoal, Black



**EC4034 - Women's Crew Tee SS**

95% Cotton, 5% Elastane, 220 GSM  
Silicone washed for super soft feel, preshrunk

Size: 2XS - XL  
Colour: White



**EC4423 - Women's Shanghai Tee**

95% Cotton, 5% Elastane, 220 GSM  
Chinese/V-neck collar, Single jersey knit

Size: XS - XL  
Colour: White



**EC4134 - Women's Crew Tee LS**

95% Cotton, 5% Elastane, 220 GSM  
Silicone washed for super soft feel, preshrunk

Size: 2XS - XL  
Colour: White



**EC1313 - Men's Quick Dry Short**

100% Quick-Dry Nylon, combination Fabric Texture, 160 GSM  
Water repellent, quick drying, reinforced seat patch

Size: 76 - 112  
Colour: Sand, Ink, Charcoal, Black



**EC3744 - Men's Bow Pant**

98% Cotton, 2% Elastane Twill, 210 GSM  
Cotton stretch with silicone wash, flat front

Size: 30 - 44  
Colour: Ink, Charcoal



**EC3771 - Men's Trimmer Pant**

85% Nylon, 15% Elastane, 160 GSM  
bluesign accredited fabric, high stretch, water repellent

Size: 30 - 44  
Colour: Ink, Charcoal, Black



**EC4115 - Women's Grinder Polo**

72% Recycled Polyester, 28% Cotton, 175 GSM  
bluesign accredited fabric, moisture absorbing & fast drying

Size: XS - 2XL  
Colour: White, Titanium, Ink, Charcoal, Black



**EC4042 - Women's Hydra Polo**

100% Polyester Pique Combination Knit, 145 GSM  
Quick drying performance fabric, moisture wicking

Size: 2XS - 2XL  
Colour: White, Silver, Ink, Charcoal, Black



**EC3831 - Women's NZL Jacket**

77% Nylon, 23% Polyurethane Shell, 100% Polyester Mesh Lining  
Waterproof, breathable, fully seam sealed, mesh lined

Size: 8 - 12  
Colour: Titanium, Charcoal



**EC4465 - Women's Keel Skort**

100% Polyester, 174 GSM  
Water repellent, quick-dry, non iron garment

Size: 4 - 14  
Colour: Sand, Ink, Charcoal, Black



**EC2336 - Women's Bow Skort**

98% Cotton, 2% Elastane Twill, 210 GSM  
Cotton stretch with silicone wash, flat front

Size: 4 - 14  
Colour: Desert, Ink, Charcoal



**EC4496 - Women's Trimmer Skort**

85% Nylon, 15% Elastane, 160 GSM  
bluesign accredited fabric, high stretch, water repellent

Size: 4 - 14  
Colour: Ink, Charcoal, Black



**EC4469 - Women's Bow Pant**

98% Cotton, 2% Elastane Twill, 210 GSM  
Cotton stretch with silicone wash, flat front

Size: 4 - 14  
Colour: Charcoal



**EC4771 - Women's Trimmer Pant**

85% Nylon, 15% Elastane, 160 GSM  
bluesign accredited fabric, high stretch, water repellent

Size: 4 - 14  
Colour: Ink



**EC529 - Marnie Dress**

55% Cotton, 42% Nylon, 3% Elastane  
Wide neck styling with mitre hem sleeve, back hem split

Size: 4 - 14  
Colour: Ink, Black



**EC4461 - Women's Bow Short**

98% Cotton, 2% Elastane Twill, 210 GSM  
Cotton stretch with silicone wash, flat front, cuffed hem

Size: 4 - 14  
Colour: Ink, Charcoal



**EC4777 - Women's Trimmer Short**

85% Nylon, 15% Elastane, 160 GSM  
bluesign accredited fabric, high stretch, water repellent

Size: 4 - 14  
Colour: Ink, Charcoal, Black



**EC2341 - Women's Quick Dry Short**

100% Quick-Dry Nylon, combination Fabric Texture, 160 GSM  
Water repellent, quick drying, reinforced seat patch

Size: 6 - 14  
Colour: Charcoal



**EC3959 - Unisex Ozone Cap**

100% Polyester Microfibre, 100% Polyester Mesh Lined  
Crown peak cap, back strap and sweatband, clip cord on back

One Size  
Colour: White, Titanium, Sand, Ink, Charcoal, Black



**EC867 - Unisex Microfibre Sun Hat**

100% Polyester Microfibre Twil  
Wide brim sun hat, sweatband and crown lining, contrast trim

One Size  
Colour: Titanium/ Charcoal, Charcoal



**YRFX - Unisex Reflex Webbing Belt**

60% Elastic, 40% Polyester  
Elasticated webbing belt, metal buckle, partial leather coverage

Size: S - XL  
Colour: Beige/Brown, Ink/Brown, Black/Black



## Accessories Range.

Accessories Range

Sometimes all it takes to complete the look is a nice belt, a hat or a tie.

All the items in our accessories range can be customised to be in line with your overall branding and desired look.

*\*The items in our Accessories Range are meant to inspire. Please enquire with one of our sales reps if you have specific needs.*





# Accessories Range.

Customised Caps



Curved Peak Caps



Flat Peak / Snapback Caps



Widebrim Sunhats



Classic Bucket Hats



Essential / Hi Vis Beanies





Turn Over Sport Socks



Pull up Sport Socks



School Socks



Crew Socks



Trade Socks



Ankle Socks



Classic Belts



Customised Ties





Promotional Items

## Promotional Items.

Sky is the limit when it comes to our Promotional items. Branded pens, buffs, magnets, soccer balls - you name it.

Items you can use to help build a certain culture at work, or simply use for brand awareness and marketing.

*\*The items in our Promotional Range are meant to inspire. Please enquire with one of our sales reps if you have specific needs.*





# Promotional Items.

Pens & Flash Drives



Re-usable Drink wear



Lanyards and Key Rings



Note Books



Sports Items



Tote Bags





## Case Study: Fonterra

- Milk Tanker Uniforms

“Velocity solved our need for a customised, unique, and fit for purpose uniform for our tanker operators.”

From day one the team at Velocity included our staff and union representatives as an active part of the design process. It didn't take long for the team to prove just how committed they were to understanding our ever-changing needs as a business.

Velocity Clothing have taken the service level of our uniform requirements to a whole new level.

- *Brendon Graham, Strategic Procurement Manager*



## Case Study: Manurewa East School

“Velocity Clothing has been absolutely amazing in seeing our vision and interpreting what we were looking for in our new school uniforms and sports uniforms.”

Our students wear their uniforms with pride and they look and feel amazing, especially when they are representing their school at sports or cultural events.”

- *Mary Takatainga, Principal, Manurewa East School*





## In-House Brand: VMG Clothing

“VMG is a mix of ex-chief stewards, crew, sailors, and fashion designers and for thirty years have been pushing the limits to design innovative, high performance crew wear for the superyacht and marine market.”

With the Head Office, Warehouse and showroom in Auckland and a European Office in Palma de Mallorca, VMG are well-placed to service all your global crew wear needs.



## In-House Brand: Hunttech

“From the high plains of Wyoming, to the freezing wetlands of Scandinavia. From the dense bush of the Central North Island, to the barren mountain tops of the Southern Alps in New Zealand.”

For more than three decades our Hunttech gear has been smashed in some of the harshest hunting environments on the planet. The result? State-of-the-art hunting kit that keeps you warm, dry and comfortable and allows you to take on the elements no matter what Mother Nature throws at you.



**Men's Size**

	<b>XS</b>	<b>S</b>	<b>M</b>	<b>L</b>	<b>XL</b>	<b>2XL</b>	<b>3XL</b>	<b>4XL</b>	<b>5XL</b>	<b>6XL</b>
Chest (cms)	92 - 96	97 - 101	102 - 106	107 - 111	112 - 116	117 - 121	122 - 126	127 - 131	132 - 136	137 - 141
Chest (inches)	37	39	41	43	45	47	48.5	50.5	52.5	54.5
Waist (cms)	76	81	86	91	96	101	106	111	116	121
Waist (inches)	30	32	34	36	38	40	42	44	46	48

**Women's Size**

	<b>XS / 8</b>	<b>S / 10</b>	<b>M / 12</b>	<b>L / 14</b>	<b>XL / 16</b>	<b>2XL / 18</b>	<b>3XL / 20</b>	<b>4XL / 20</b>		
Chest (cms)	81 - 85	86 - 90	91 - 95	96 - 100	101 - 105	106 - 110	111 - 115	116 - 120		
Chest (inches)	32	34	36	38	40	42	44	46		
Waist (cms)	65	70	75	80	85	90	95	100		
Waist (inches)	26	28	30	32	33	35	37	39		
Hip (cms)	91	96	101	106	111	116	121	126		
Hip (inches)	36	38	40	42	44	46	48	50		

**Kid's Size**

	<b>4</b>	<b>6</b>	<b>8</b>	<b>10</b>	<b>12</b>	<b>14</b>				
Chest (cms)	59 - 63	64 - 68	69 - 74	75 - 80	81 - 86	87 - 94				
Chest (inches)	24	26	28	30	33	35				
Waist (cms)	57	62	67	71	75	79				
Waist (inches)	22	24	26	28	29.5	31				



Size Guide.

How to Measure.



**Men's and Kids Measurements**

**Chest:** Measure around the widest part of your chest running the tape high under your arm

**Waist:** Measure around the body, where you naturally wear your pants

**Women's Measurements**

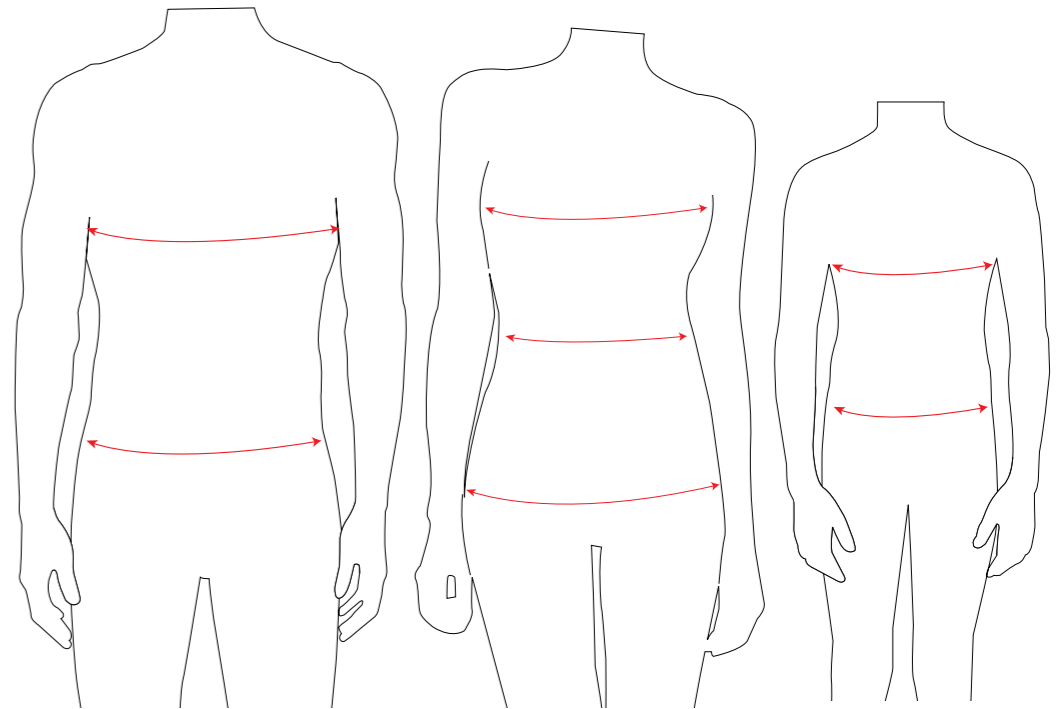
**Chest:** Measure around the widest part of your bust and shoulder blades running the tape high under your arm

**Wast:** Measure around the body, at your natural waistline

**Hip:** Measure around the widest part of your hipline

**Custom Fits**

*The fits mentioned throughout our lookbook are just guides. If you are after a specific, custom fit, please let one of our sales reps know*





# VELOCITYCLOTHING

A well-designed uniform  
reflects your organisation's *values*  
and *visions* to the rest of the world.

[VELOCITYCLOTHING.CO.NZ](http://VELOCITYCLOTHING.CO.NZ)

Velocity Clothing is part of GLOBAL VELOCITY GROUP LTD